



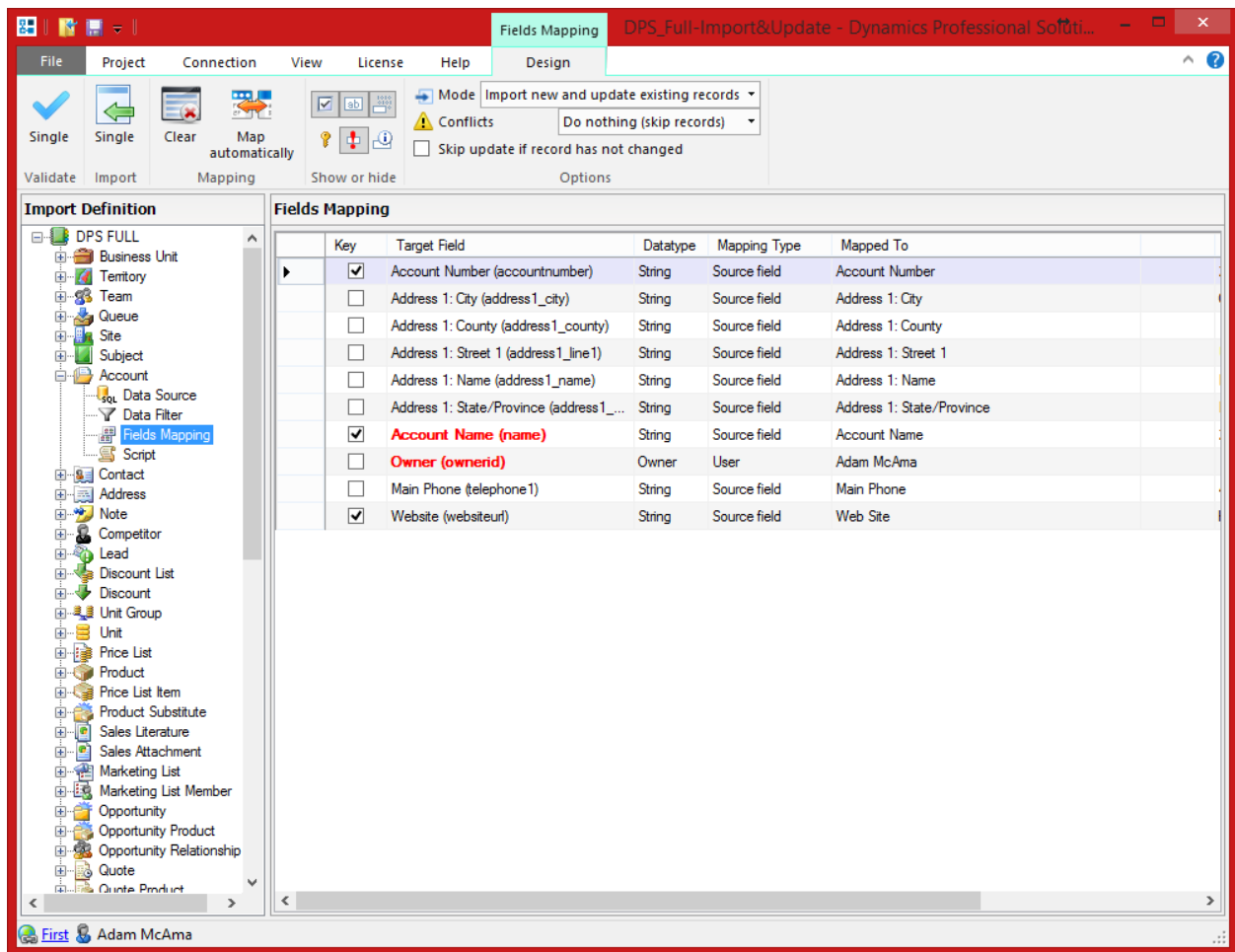
Import Tool

For Dynamics CRM 2013



Import Tool

- Import Tool is a powerful add-on built specially to import data into Microsoft CRM.
- It allows you to import, update or delete core Microsoft CRM entities (Accounts, Contacts, Leads, Products, Price Lists etc.) as well as custom ones.



Import Tool

With the Import Tool you can:

- Import data from different sources:
 - ✓ SQL Server
 - ✓ Microsoft Excel
 - ✓ Text files (csv, txt, xml)
 - ✓ Any ODBC data provider
 - ✓ Email mailbox using POP3 or IMAP protocol
 - ✓ Or you can develop your own data source plugin.
- Save import project containing mapping schema, use functions to transform the input data, create custom scripts and much more.
- Use different import modes: import new records, update existing records, perform both at the same time, delete unwanted records or change record status (for example activate, deactivate, etc.).
- Import data into custom entities and fields.
- Run import process from a command line which can be used to automate or schedule the import process.

