

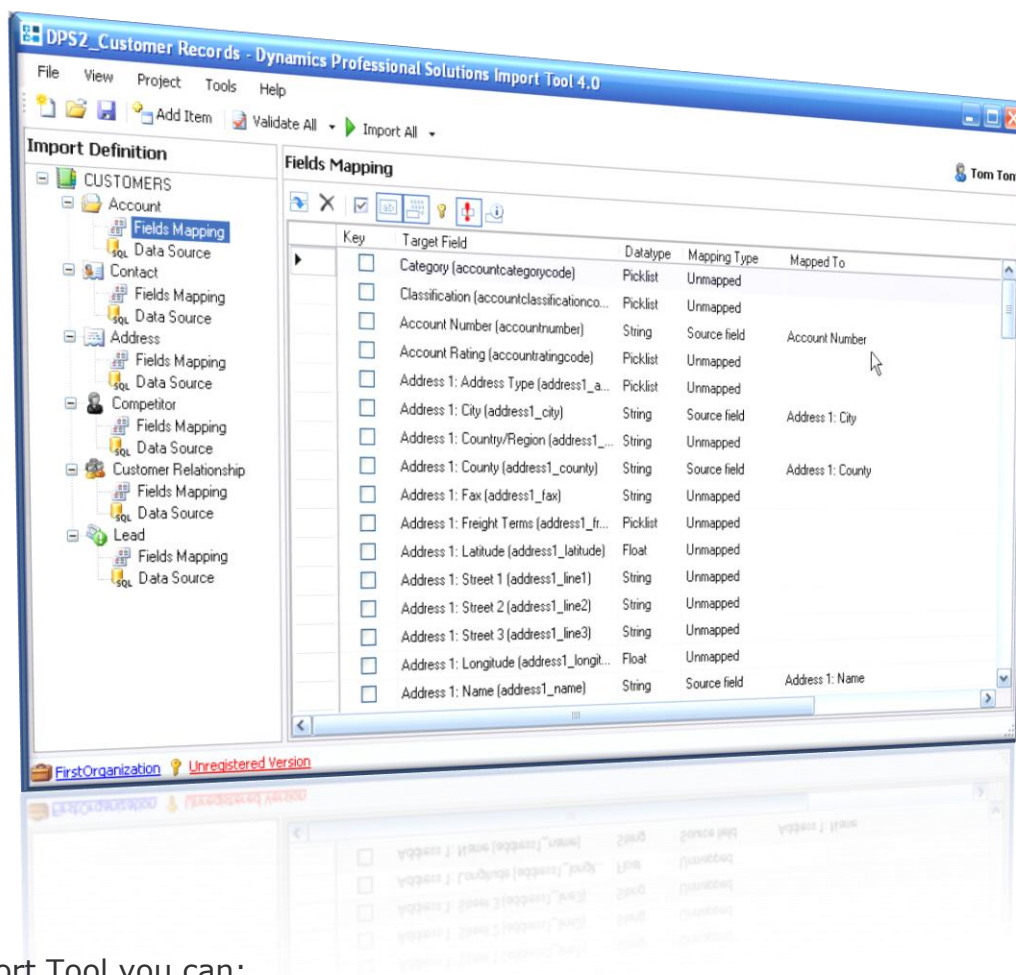


Import Tool
for Microsoft Dynamics CRM 4.0



Import Tool

Import Tool is a powerful add-on built specially to import data into Microsoft CRM. It allows you to import or update all elements of Product Catalog, any core Microsoft CRM entity (Accounts, Contacts, Leads, etc.) or even your own custom entities.



With Import Tool you can:

- Import data from different sources (SQL, Excel, text file, ODBC, or develop your own), easily save field mapping schema, use functions to transform input data and much more
- Use 4 different modes: import new records, update existing records perform both at the same time or delete matching records
- Import data into custom entities and custom fields
- Start import process from a command line what allows you to automate or even schedule the whole process